

PATIENT RESTRICTED

Coalinga State Hospital

OPERATING MANUAL

SECTION – HUMAN RESOURCES
ADMINISTRATIVE DIRECTIVE NO. 912
(Replaces A.D. No. 912 dated 7/11/06)

Effective Date: July 12, 2007

SUBJECT: ORGANIZATION CHART

I. PURPOSE

To establish a systematic review of all Organization Charts that governs the care of Individuals and the operations of Coalinga State Hospital (CSH).

II. AUTHORITY

By Order of the Hospital Executive Director; and California Code of Regulations, Title 22, Sections 71107 and 73205.

III. POLICY

CSH Administration is organized to carry out its missions and functions in an effective and efficient manner. Organization Charts are prepared to reflect the official reporting relationships, functions, and responsibilities.

IV. METHOD

- A. The Organization Charts of CSH shall be reviewed and/or revised annually or sooner pending the change to legislation, regulation, or hospital/departmental needs. Organizational changes shall be recommended by the appropriate Supervisor and/or Manager to the Personnel Department for review and approval. Upon formal approval by Personnel, the updated Organization Chart will be forwarded to the Director of Standards Compliance for licensing purposes.
- B. Current copies of all CSH Organization Charts shall be maintained on the "I" Drive.



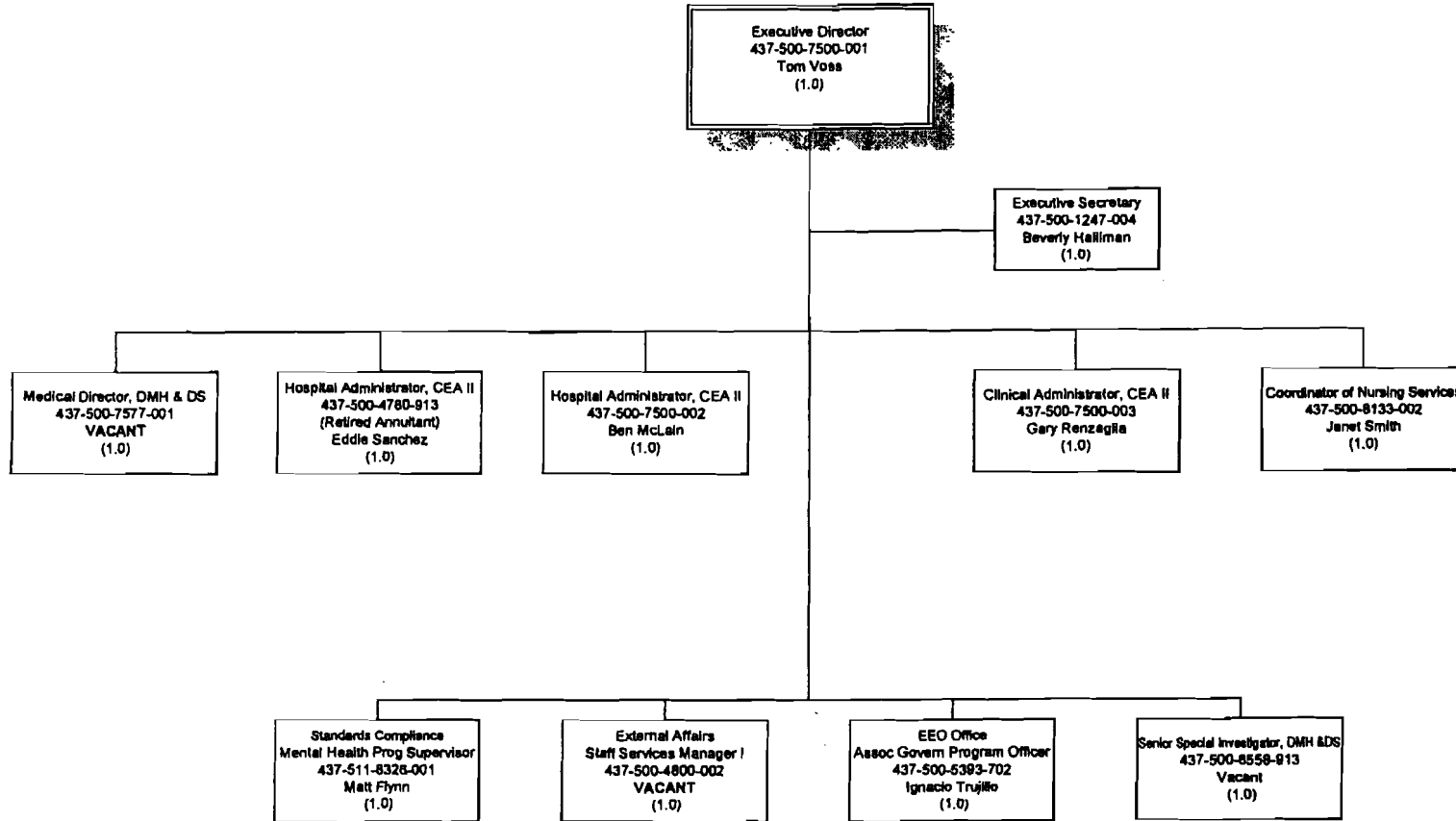
BEN MCLAIN
Executive Director (Acting)

Cross Reference(s):

Attachment – Executive Office Organization Chart

DEPARTMENT OF MENTAL HEALTH
COALINGA STATE HOSPITAL

EXECUTIVE OFFICE



W. T. Voss 2/21/07

W. T. VOSS
Executive Director

DATE